

Composing Calligraphy

Khawla Bint Ahmed Bin Khalifa Alsuwaidi

”

The Letter is the fundament of
logic and wisdom.
Through it emerge tales of eternity and
the beauty of feelings and thoughts

Rhāwla Bint' Ahmēd Bin' Rhalifa Al'sūwāidi

“

When asked about what is the most effective and precious way to convey her message, she answered with no hesitation “The Letter”. For many, this might seem like a confusing answer and not an enough one; but for Her Highness Sheikha Khawla Bint Ahmed Bin Khalifa Al Suwaidi, the Letter blends all her passion and love in the world of art, culture and literature.

Being a poet, a writer and a Calligraphy artist, “the Letter” has played a big role in Sheikha Khawla’s day to day life, it had inspired her to think, write, draw and create her own philosophy in life.

الحرف اساس المنطق والحكمة ومنه تتبلور حكايات الدهر وجمال الاحاسيس والفكر

“ The Letter is the fundament of logic and wisdom.
Through it emerge tales of eternity and the beauty of feelings and thoughts ”

Through her letters, Sheikha Khawla was able to translate her thoughts into poetry and quotes. Thoughts that have first touched many young Emirati and Arab women, encouraging them to give voice to their words and express their feelings through art, poetry and more.

Sheikha Khawla’s poetry and quotes consist of guiding and enlightening people with topics related to her own experiences in life, as well as giving importance to the Arabic language and to the Arabic culture.

COMPOSING LETTERS... COMPOSING CALLIGRAPHY

Being drawn to the Arabic letter, to Arabic literature and to the Arabic Culture, Her Highness began to dive deeper in the artistic and cultural world of the Middle East, an artistic culture that had been wearing off bit by bit with time. In 2008, she was introduced to the world of Arabic Calligraphy, to its artistic and cultural history and was fascinated by how much there is into it that her curiosity lead her to explore. With that, she began learning Calligraphy both theoretically and practically.

This is when everything started to merge, the poetry, the quotes, the calligraphy and quite importantly, the music.

الموسيقى .. لحنها بلسم الروح

“ The melody of music..
is remedy to the soul ”





In her artworks, the viewer can sense the elegant and the swaying feeling of the words. Sheikha Khawla is known for her unique brush stroke that defines her own Calligraphy style. When asked about the way of drawing her letters, she answers “It’s instinctive, a feeling that I get as soon as I hold my brush, turn on the background music and sit at my desk. It cannot be described, I enter a world where no one can interfere other than my thoughts, my imagination and myself. At that particular time, using my words, I am Composing Calligraphy”

What is different between “Composing Calligraphy” and previous solo exhibitions is that this time it is even more personal. With the choice of exhibiting in a gallery she founded, Sheikha Khawla wishes to strengthen her message enhancing and highlighting the art of Arabic Calligraphy through showcasing the different phases of her calligraphy journey.

All by being passionate about and appraising this culture and the History of the Arabic Culture and the Arabic Calligraphy, Sheikha Khawla tries to include a touch of modernity in her freedom of composition. Throughout her artistic journey, she explored her creative and sensitive abilities in order to evolve and create something new, stepping aside somehow from her classical works.

In this exhibition and for the first time, we see diverse colours and novel ideas, a new approach in her works, creating a distinctive perception of the artist and a new conversation between the artist and the viewer.



خولة للفن والثقافة
KHAWLA ART & CULTURE

Khawla Art and Culture is a private entity that is dedicated to promoting art, culture and thoughts. It was founded by Her Highness Sheikha Khawla Bint Ahmed Bin Khalifa Al-Suwaidi, wife of H.H. Sheikh Tahnoon Bin Zayed Al Nahyan, the UAE's National Security Advisor, as an organization aimed at promoting interest in all types of classical arts and focuses on reviving the art of Arabic calligraphy across all its schools and directions. It seeks to nurture young talents and share the latest knowledge in the fields of art, thoughts and culture.



khawlaartandculture



khawlaacf

Khawla Bint Ahmed Bin Khalifa Al Suwaidi

Born in the United Arab Emirates

She is a poet, an artist, and a writer. Fascinated by Arabic calligraphy, she studied and specialized in one of its distinct forms known as Al Diwani Al Jali. She created a new, malleable and modern style of calligraphy aligned with her own personality – one which reflects her unique artistic touch on her canvases.

Her artistic works showcase her own distinct Arabic calligraphy with a personal signature through her poems, morals and words of wisdom and philosophy in life. She established “Khawla Art and Culture” to support artists and talents in various cultural fields all over the world.

She also established “Khawla's Cultural Majlis”, a council concerned with tracking cultural affairs. The Majlis holds a monthly meeting to discuss cultural matters in the fields of art, calligraphy and poetry, as well as numerous seminars dealing with various aspects of culture.

Words & Artworks by

Khawla Bint Ahmed Bin Khalifa Alsuwaidi

All artworks are created using ink on paper



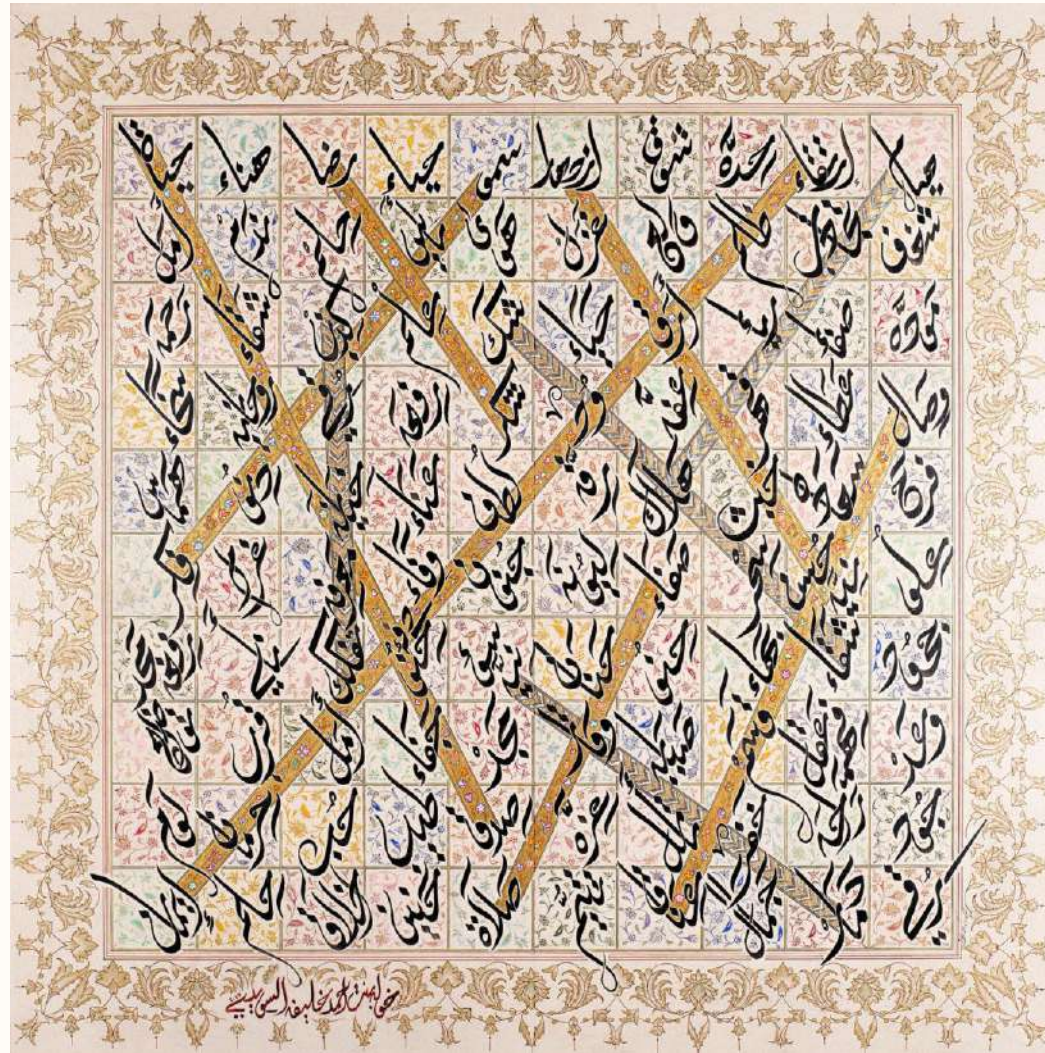
Malath Al Amenin

(Peaceful Sanctuary)

197 x 116 cm
2018

The soul in its prayer
is the refuge of the peaceful.

Purity for the repentant
Worship for the righteous
Awakening for those who wish
Asceticism for the worshiper
So lets explain it with the letters of
ancient history,
to be a method of thinking that
ascetics followers track



Asrar El Rouh

(Secrets Of The Soul)

64.5 x 64 cm
2016

Protect the soul with faith
for it to transcend

Pray in the niches of love
for the purity of existence

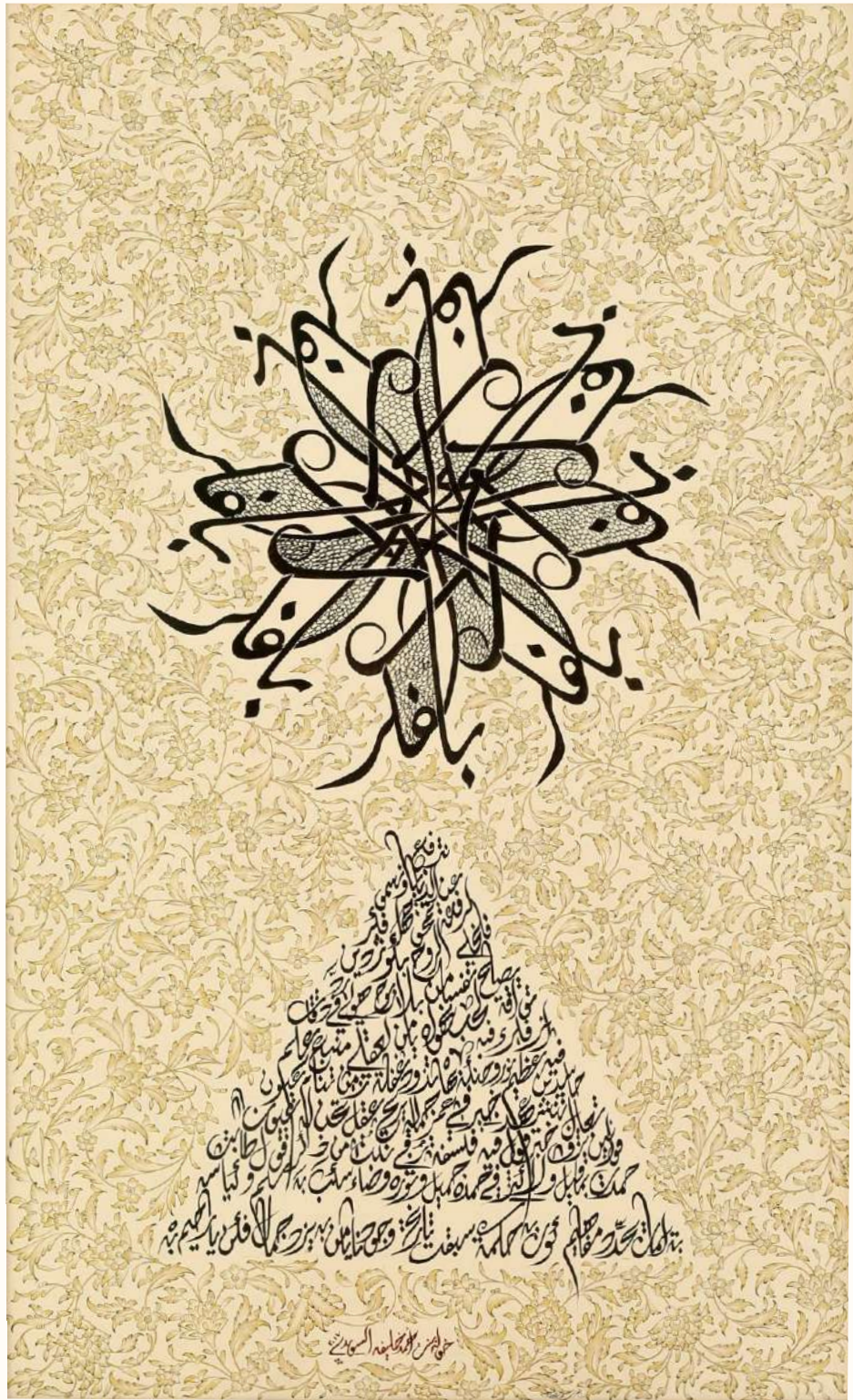
Reach out to the soul of
your lover for an eternal embrace

And don't lose the way.
Honor your vows to live
the dignity of existence.

Belfeker

(Through the Mind)

Through a wise mind the
soul transcends.





Shoog Eini

(The Longing of My Eyes)

My beloved

From the longing of my
eyes
passion blasted

And my eyes melted in
your gaze

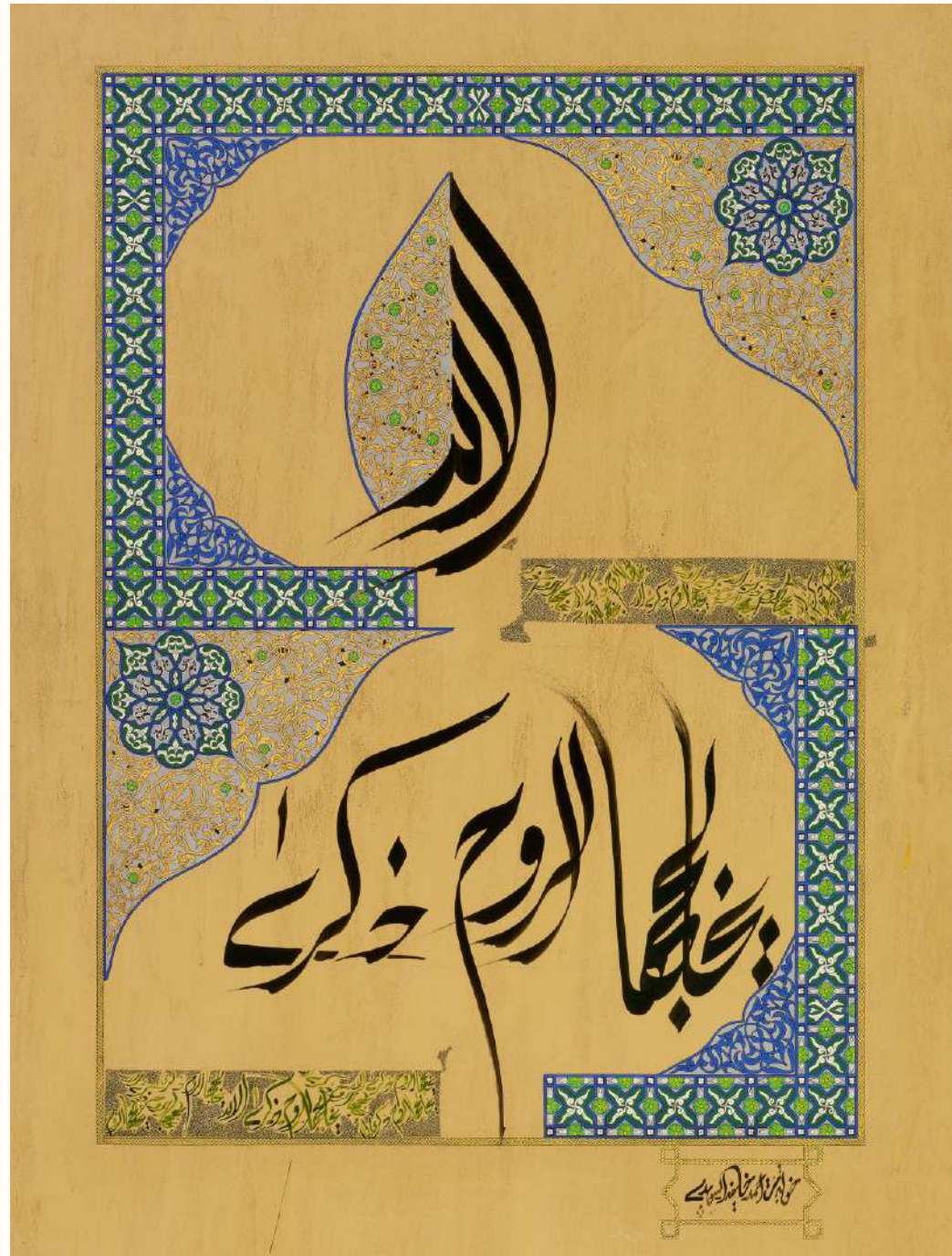
90 x 95 cm
2017

Al Ilah

(For God)

The remembrance of
God merges with the soul
And the soul manifests
and rises

The mind repeats the
love of God
As life tolerates and
forgives.



141 x 112 cm
2020



Al Sadeeq

(The Friend)

67 x 81.5 cm
2019

The friend
if good,
is a beautiful fragrance surrounding you,
and if bad,
can be sickening

The loyal friend
is like an olive tree
neither eastern nor western

The pulse of its sincerity
revives life in eternal loyalty

Ru'aak

(Your Visions)

Your visions are manifested in
His essence,
for He is the one and Only
true beloved..
O God, grant him his wishes
and let paradise be his last
abode.

He addresses the soul
and draws within his verses
the aspirations of the heart
and the comfort of his wishes.

He manifests Himself in our
visions,
and addresses the universe
with His wisdom.

He is the ever-exalting
supreme Being
and He is the most noble of
beings.



94 x 67 cm
2019



Tajalla

(The Manifestation)

67 x 95 cm
2022

As his beauty was manifested
the stars knelt in humility to His perfection.

To His absolute beauty,
the holy verses prostrate
and the whole universe adores Him.

He exists to be the Creator,
and my soul belongs to Him entirely
As I am willfully his captive,
for His apparitions dwell in my mind.

Ishtaqtoh

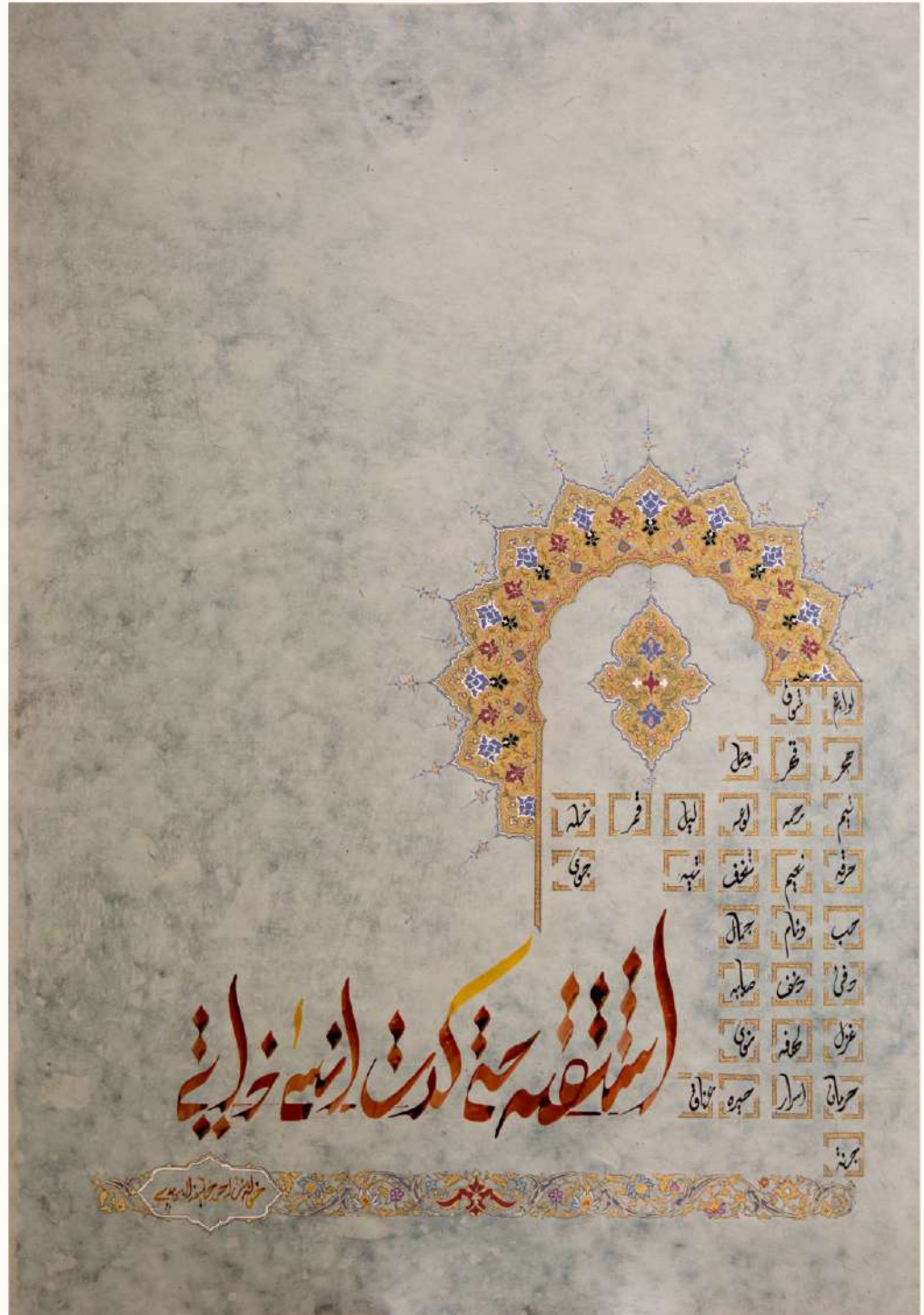
(I Miss Him)

I miss him boundlessly, that
I almost forgot myself.

My yearning to him is
burning my soul,
O my desolate self, my
anguish,
my scarcity of communion
My soul is infatuated with
his apparition.

What do I have? A night, a
moon, a consoling friend
And the pain of longing to
the blessings of his love,
That love which makes my
heart bleed.

O how hypnotizing is the
beauty of his warmth,
His company is the utmost
solace in this world..
Alas, why should we
painfully depart,
Depriving each other from
the embrace of paradise!



94 x 67 cm

2022



Hubb

(Love)

68 x 98.5 cm
2022

Once love visits the heart,
it remains eternally.

The heart indulges in a
monologue,
whispering notions in its abruptions,
beats, and emotions.
In its Sanskrit alphabet
that long predates our hearts,
Love declares its immortality
in the core of the paramour.



Salat

(Prayer)

51 x 70 cm
2022

Prayer purges and exalts the soul,
and Prayer fills the soul
with the Almighty's scent.

O God the Merciful,
you always decide the best,
and your universe enchants
my soul boundlessly.

You are my everlasting destination,
I beg you to stay so!



Tamaant

(I Stared at You)

78.5 x 110 cm
2022

I stared at you until I became whole.
I accepted my madness of you
until you became my promise.

Your identity dwells within my soul
chanting the melody of our love.

I made you the final abode of
my lifetime
and you became the essence of
my entire existence.



Tashahada

(Whatever you Behold)

Is it not enough for your vanity
that I am within you wherever you are?
For I am in your heart a kiss of security
and in your whispers a chanted rhyme.

Whenever you are present,
I exist
And whenever you see me,
I can see everything.

49 x 67.5 cm
2022



Tawashah

(Adorn Yourself)

In times of seclusion,
adorn yourself with serenity.

You draw in my heart the beauty of love,
So that I can live as a hermit in my cloister,
Beseeching you with prayers stemming
from my chest.

In my seclusion, you are my refuge,
Inside my convent, you are my destination, my
prostration, my faith and my prayer.

68 x 97 cm
2022



Al Hayat

(Life)

Life is a cosmic narration of its thoughts immortalized with the letters of light that bestow eternal life.

315 x 149 cm
2021

The Painting of Life... an epic poem woven with a plethora of languages, and what is language anyway but an act of the tongue... and what is the pen but the tongue of the mind. Language's intents carry messages through time and space with its expressions implying eloquent, deep meanings, poetic and prosaic sayings dressed in wisdom from head to toe. A painting that has sat on the throne, enrobed with expressive articles, wisdom, and literature. Her Highness Sheikha Khawla Bint Ahmed Bin Khalifa Al Suwaidi managed to combine the familiar with the odd, giving way to a scenic landscape drawn with narrative texts rich in art and intellect, celebrated and honored by the artist herself.

The painting's elements and embellishment take a color that wraps its front, with the artist's constant endeavor to preserve her work's simplicity so that its aesthetic nature does not take over the spirit of the text, always keeping this fair division in mind. The Diwani script takes over with both its Jali and regular variations, in a manner unique to the artist, embracing carefully curated texts.

The makeup of the painting, with its multiple languages and gentle and harmonious intertwining denotes a human direction that transcends boundaries of geography and creases of history, and raising thought to the heights of wisdom, coexistence, and cooperation to achieve peace and a mutual understanding that serves humanity as a whole.

The painting conveys a dance of balanced words with sharp heads and rounded ends, and if you were to further probe the contents of the painting, you would only be faced with promising hope, unlimited giving, and pure love. Life for the artist is a blessed tree, deeply rooted and rising high, emitting a lingering beautiful smell breathed in by the bewildered, under a sky abounding with meanings, intents, and insights that cannot be limited by the boundaries of alphabet, but rather shines with divine words that transcend thought and imagination.

The Painting of Life lies on a robust artistic structure interwoven with a philosophical

inclination that serves to deepen its meanings and validate the choice of words... for in the beginning was the word...

The Painting of Life reflects seven heavens

In the first, the artist sees life as a revolution of thought and altruism, birthing overflowing goodness. "The moon waxes and wanes. The tides ebb and flow. The seasons turn, each in their own time. Ever changing, never changing. Of course you'll change" – Anne Bishop

In the second, the artist sees it as moments of beauty that we should absorb fully lest this beauty dwindles by negligence. "Perhaps the sea's definition of a shell is the pearl. Perhaps time's definition of coal is the diamond." – Kahlil Gibran

In the third heaven, the artist sees life as chants where the soul manifests itself and transcends to its Creator. "Some of us are like ink and some like paper. And if it were not for the blackness of some of us, some of us would be dumb; And if it were not for the whiteness of some of us, some of us would be blind." – Kahlil Gibran

The fourth heaven harbors spheres that guide us to good deeds, it's the music of humility and reverence. "You may forget the one with whom you have laughed, but never the one with whom you have wept". – Kahlil Gibran

The fifth heaven is seen as immortal by the light of wisdom, as wisdom is the balance of justice and justice is the balance of the universe. "Should nature heed what we say of contentment no river would seek the sea, and no winter would turn to Spring". – Kahlil Gibran

The sixth heaven is seen as a blessed tree bearing the fruits of wisdom, and the epitome of wisdom is the fear of God. "In every winter's heart there is a quivering spring, and behind the veil of each night there is a smiling dawn". – Kahlil Gibran

Finally, in the seventh heaven, the artist finds rest as the bewildered breathe in the smell of life. "We can complain because rose bushes have thorns, or rejoice because thorn bushes have roses". - Abraham Lincoln.